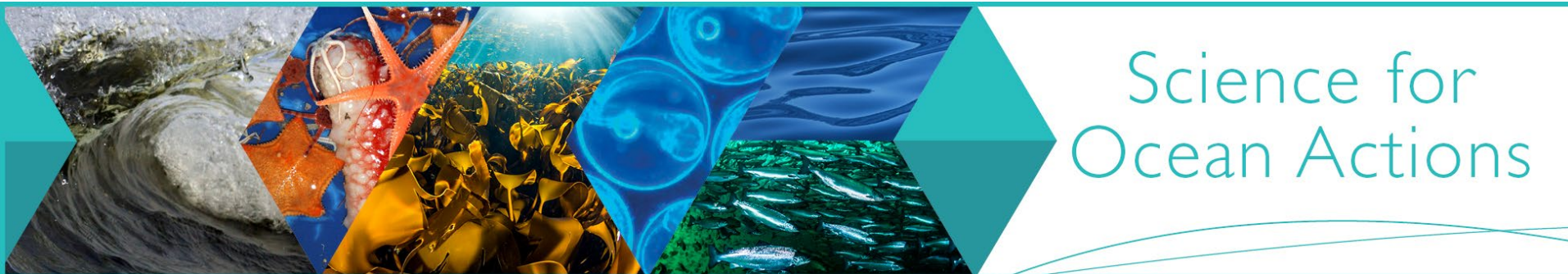


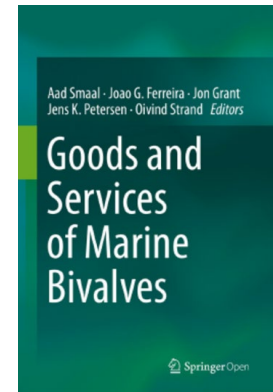
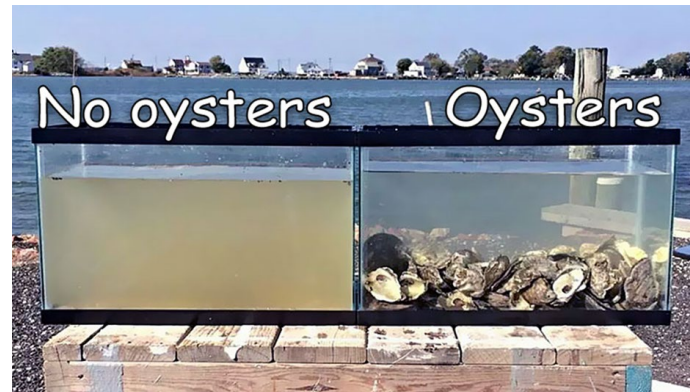
# INTEGRATED MULTITROPHIC AQUACULTURE with focus on low trophic level production

Aad Smaal  
Wageningen University  
The Netherlands



# LOW FOOD CHAIN AQUACULTURE

- ALGAE and FILTER FEEDERS feed from natural resources: extractive species
- They provide high quality human nutrition:  
= proteins/ unsaturated fatty acids/ minerals and vitamins
- They can be produced in high quantities
- They have positive impacts on ecosystem health



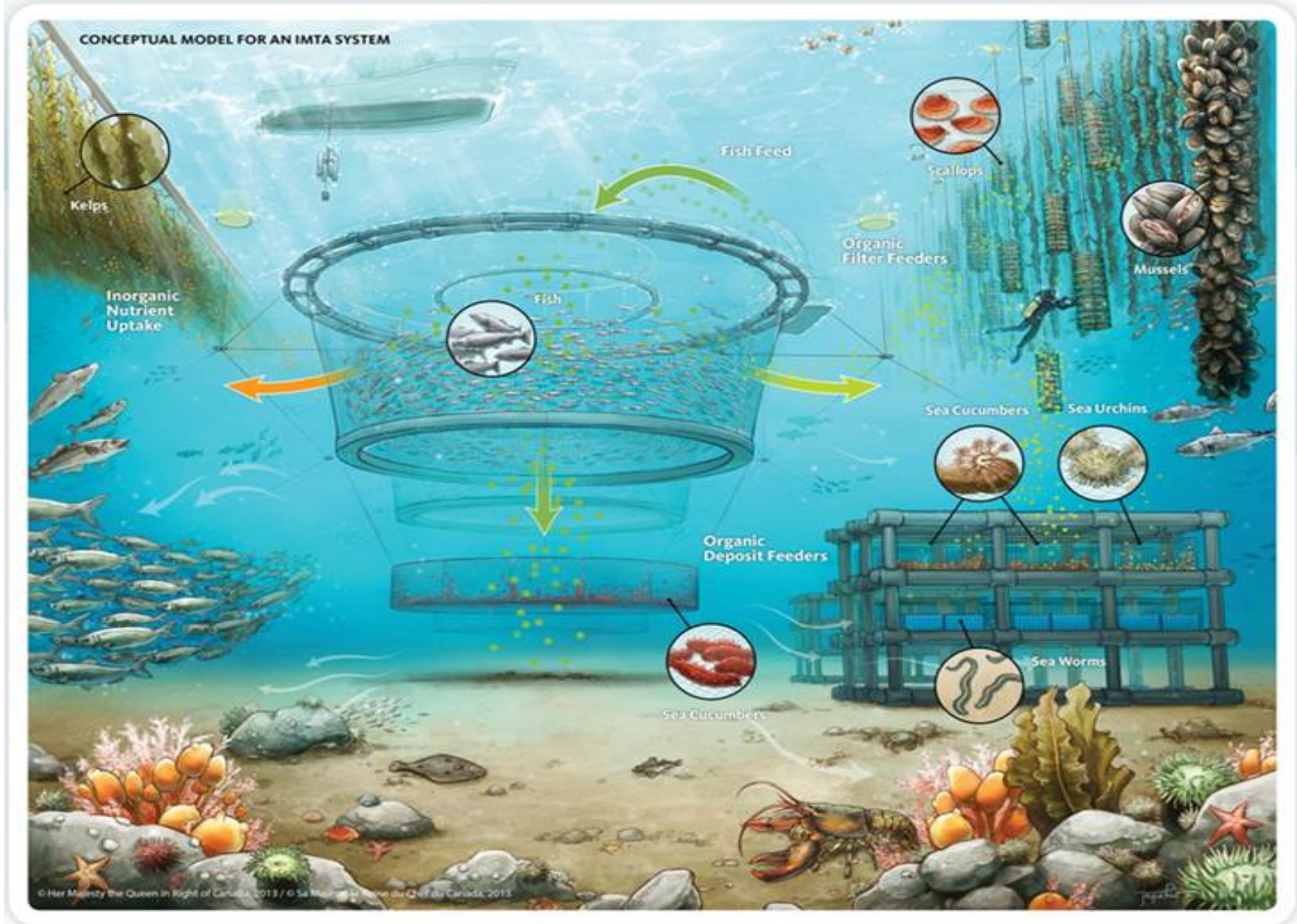
## **ACTION POINT 1:**

**To feed the world in a sustainable way**

**more effort is needed to enhance LT aquaculture**

(refer to Dag Aksnes)

# INTEGRATED MULTITROPHIC AQUACULTURE **IMTA**



---

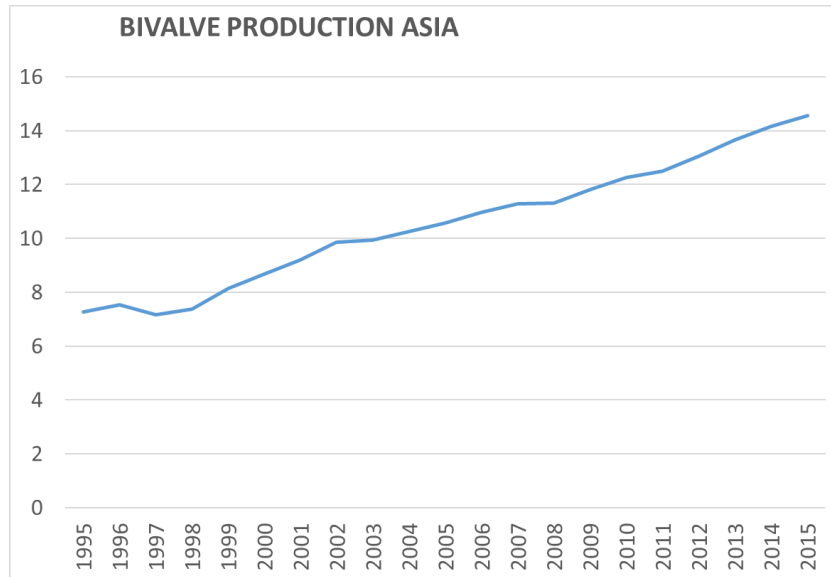
# IMTA / circular economy, recycling

- IMTA concept : use the waste of one product as a resource for another product: *for example* fish farming
  - = nutrients: for macro and micro algae
  - = suspended particles and micro algae: for filter feeders
  - = biodeposits: for deposit feeders
- Different modes of IMTA
  - = open vs close: net-pen or ras
  - = coupled vs decoupled: depends on scale
  - = main challenge: improve efficiency

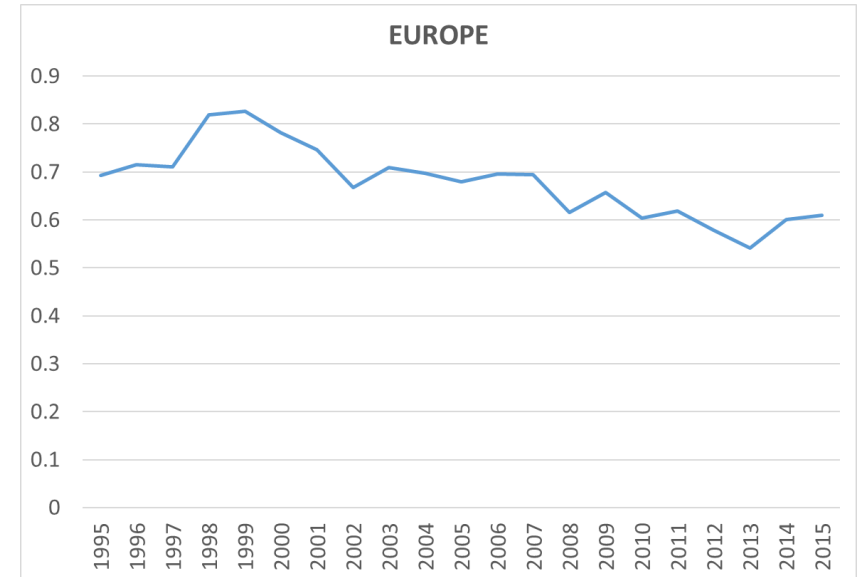
## **ACTION POINT 2 :**

**use IMTA as a tool to enhance LT aquaculture**

# LT aquaculture, regional: bivalves



**ASIA: fast growth and main producer**



**EUROPE: decrease in production, increase of imports**

## **ACTION POINT 3:**

**Effort is needed to reinforce LT aquaculture in Europe**

---

Thank you &  
thanks to  
the organisers

---

