

Climate Change and Corals Reefs



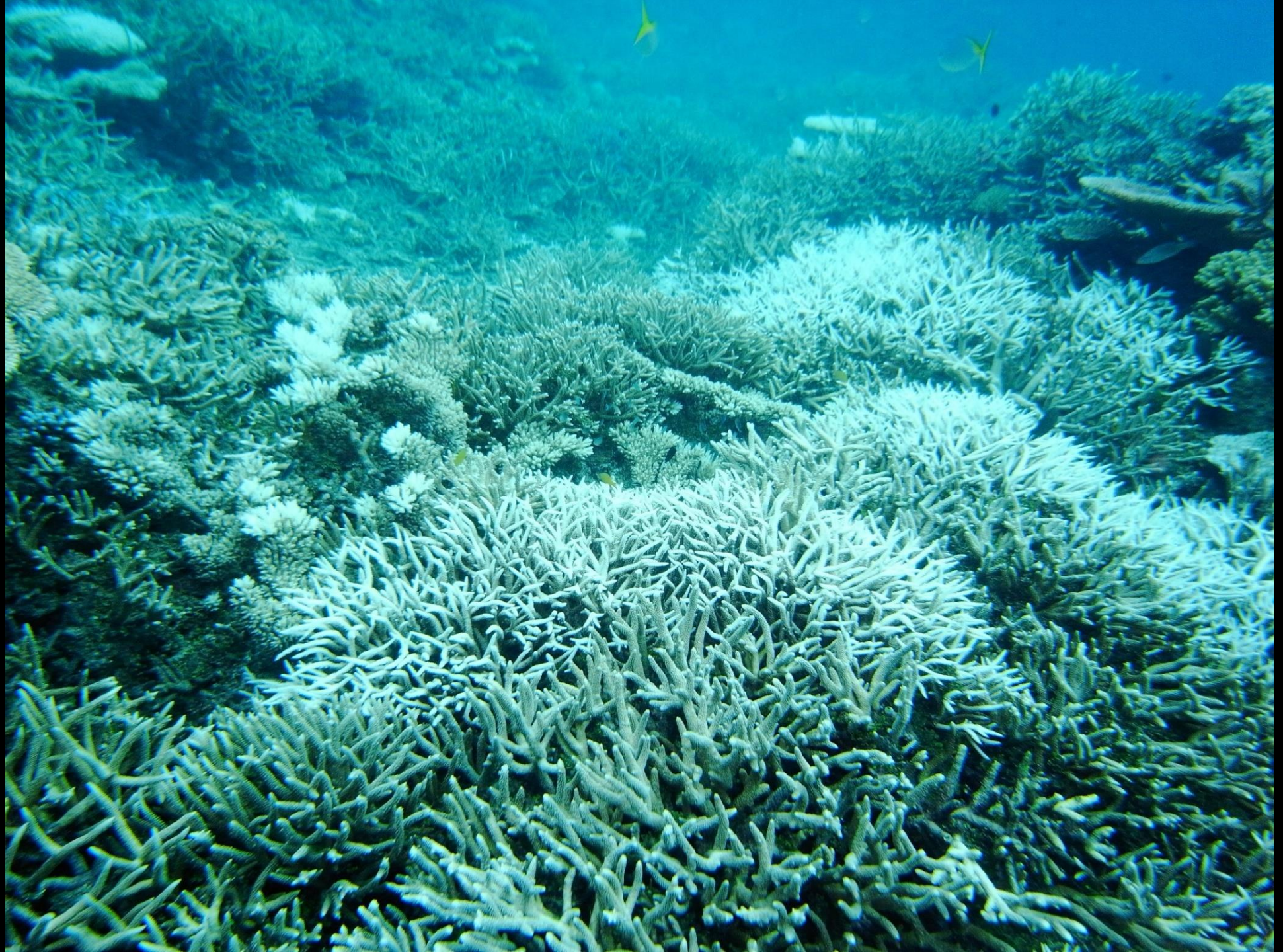
Yimnang Golbuu
Palau International Coral Reef Center











380 ppm CO₂

800 ppm CO₂



Now

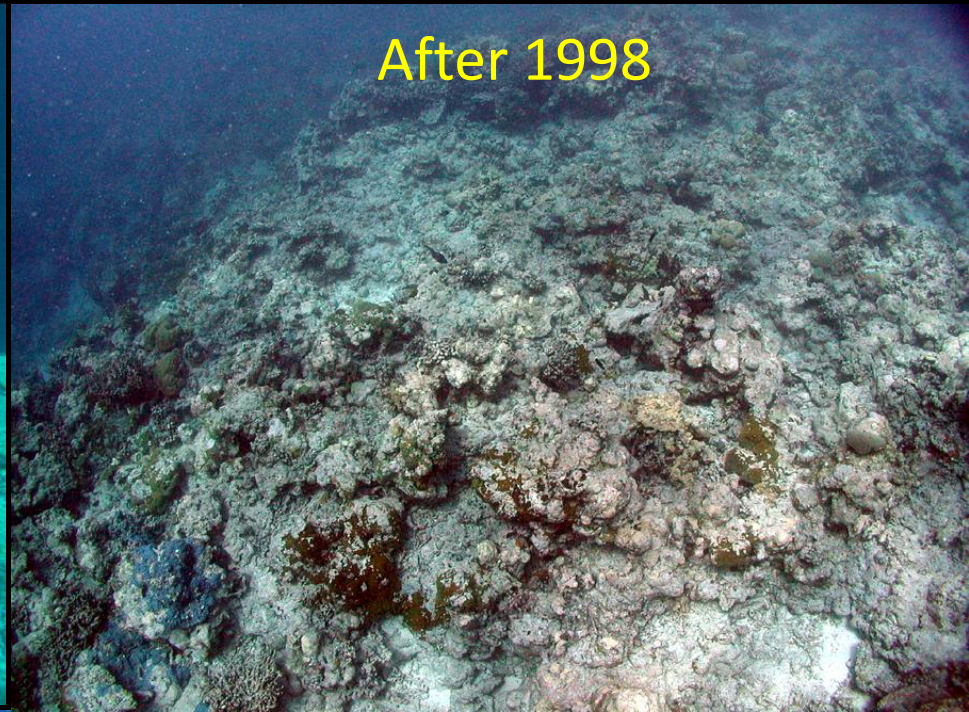
2100



Before 1998

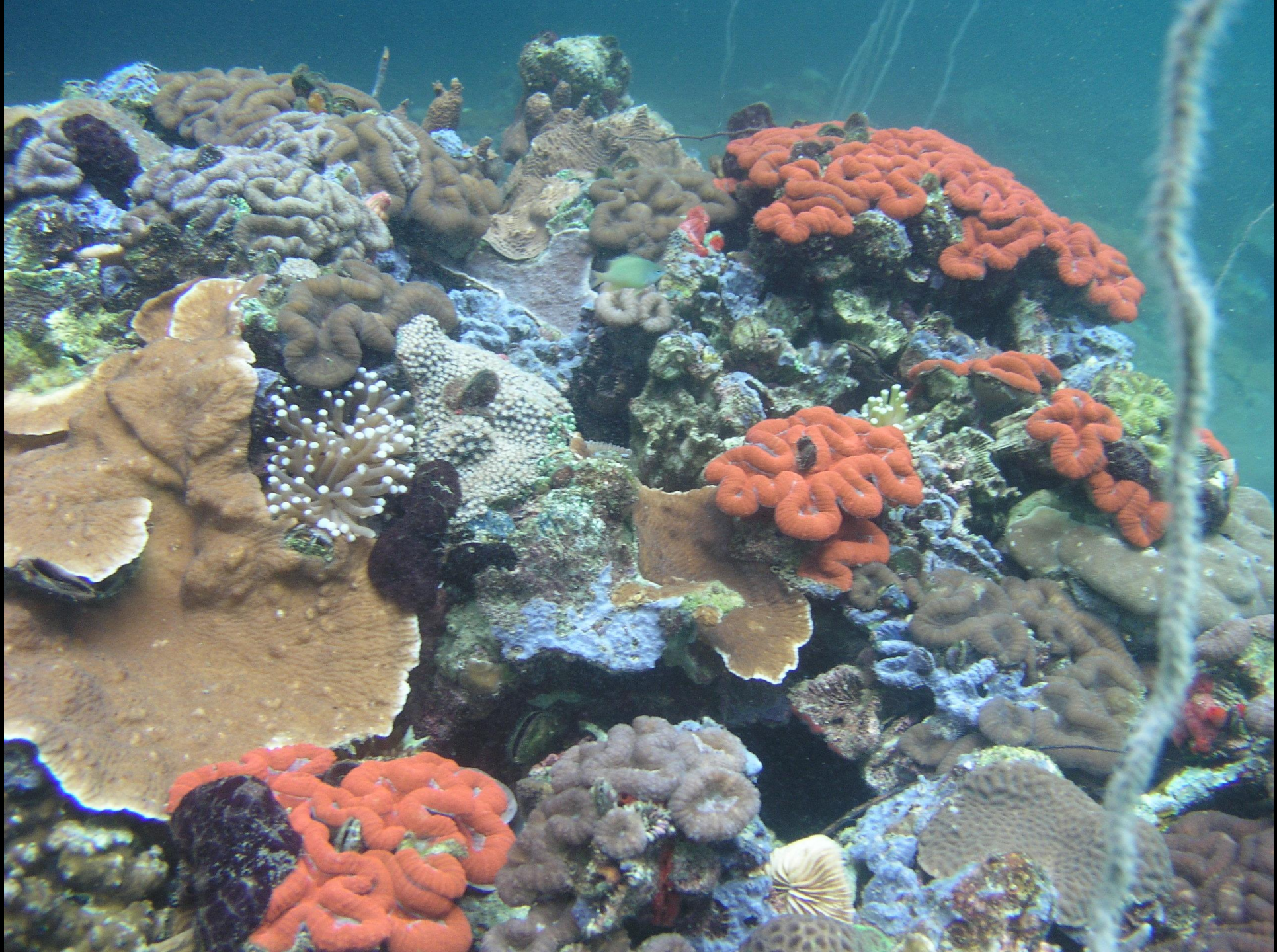


After 1998



Today

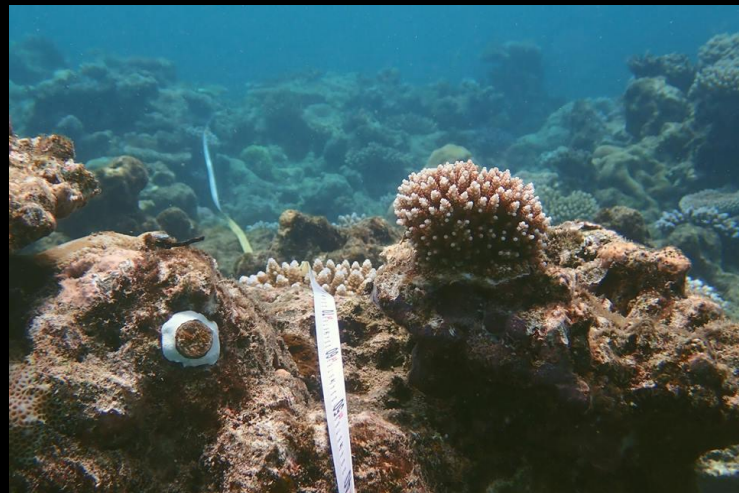








Experiments: Selective breeding of different thermal tolerance colonies



Heat tolerant corals mapped across 40 reefs in Palau.

