

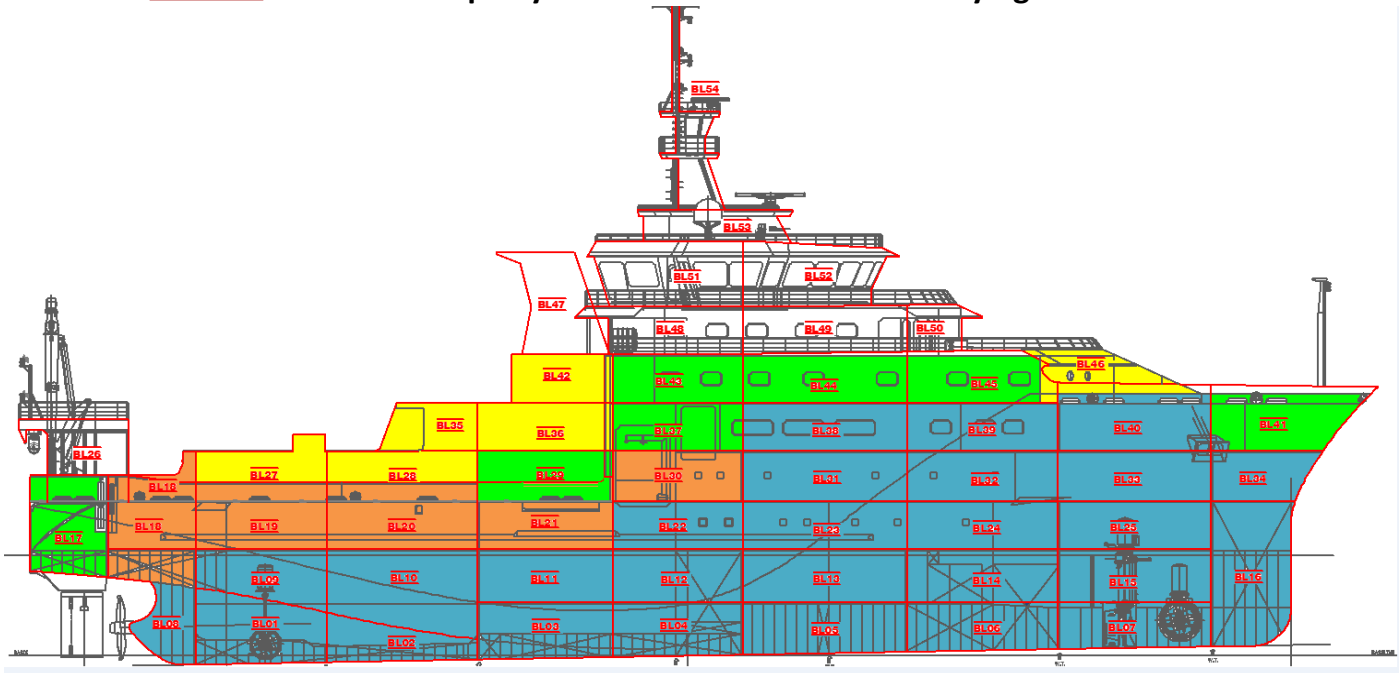
Dr. Fridtjof Nansen Replacement – Block construction

AG-460 – Hull build progress – Update by 11th Sept 2015

- Steel cutting
- Under construction
- Blocks ready to place on slipway
- Blocks on slipway

First steel cut: 13.01.2015

Keel Laying: 23.04.15



PLANNED BUILDING SEQUENCE OF BLOCKS– ref. Master plan Rev. 02

1	2	3	4	5	6	7	8	9	10
06 – 100%	05 – 100%	07 – 100%	14 – 100%	15 – 100%	04 – 100%	13 – 100%	03 – 100%	16 – 100%	12 – 100%
11	12	13	14	15	16	17	18	19	20
25 – 100%	02 – 100%	11 – 100%	01 – 100%	10 – 100%	09 – 80%	24 – 100%	08 – 90%	23 – 100%	22 – 100%
21	22	23	24	25	26	27	28	29	30
21 – 80%	20 – 80%	19 – 80%	18 – 80%	32 – 100%	17 – 40%	31 – 100%	33 – 100%	30 – 80%	34 – 100%
31	32	33	34	35	36	37	38	39	40
39 – 100%	38 – 100%	40 – 100%	37 – 25%	41 – 75%	29 – 20%	28 – 100%	36 – 100%	27 – 100%	26
41	42	43	44	45	46	47	48	49	50
35 – 100%	44 – 60%	43 – 30%	42 – 100%	45 – 20%	46 – 100%	47	49	48	50
51	52	53	54						
51	52	53	54						

NOTE! Blocks are defined as **80%** completed when ready to put on slipway - **100%** when positioned on slipway.

General comments:

- Progress – ref. master plan (MP) – rev 03, dated 01. July:
MP rev. 03 has changes in block fabrication sequence and revised block completion dates (adjustment of delays) vs. MP 02. Main milestones (launching date etc.) kept as in MP 02.
 - Block assembly on slipway and AC motor installation 1-2 weeks behind presented dates in MP 03.
 - BL 01-09 & 08 – 5-6 weeks fall back from MP 03 plan.
 - Installation of bottom tank piping ongoing – 35% of Isometrics in zone 400 (Dbl. bottom & tk top) installed
 - Pressure testing of tanks according to plan – 14 tanks completed by 11.09.
 - Onboard outfitting - foundation work and mounting of equipment ongoing.
- Equipment deliveries:
 - All major maritime equipment are now on site and placed on board.
 - RAPP winches and related equipment scheduled for delivery end Sept.

27 blocks placed and assembled on slipway by 11.09.15



Slipway 11.09.15



Slipway 11.09.15



1st dk - Messrom area w/door to galley.



Chiller units installed in engine room



MaK Generator sets on board Sept. 3rd



MaK Generator sets on board Sept. 3rd



Propulsion room ready for AC motor foundations



Rudder arrived on site



Mounting rings for drop keel transducers



Seawater, bilge and firepumps – below T/D



690V trafos, lab 9 cooling plant & freezer compr. in propulsion room



Outfitting – foundation work ongoing



BL 08 - stern tube on slipway

